

Maypearl ISD

Cycle Menu 2008-2009

	MON	TUES	WED	THURS	FRI
Bkfst	Biscuit & Gravy	Breakfast on a Stick	Breakfast Pocket	Biscuit & Gravy	Toast & Sausage Patty



Milk and juice are offered daily. (Cereal with toast is also offered as an entrée choice daily.)
If a child chooses less than 3 items, they will be charged at an ala carte price.



	MON	TUES	WED	THURS	FRI
1	Burritos Beans Salad Fresh Fruit	Pizza Corn Salad Cake	Sloppy Joes Fresh Veggies Baked Beans Pudding	Ckn. Nuggets / Gravy Mashed Potatoes Glazed Carrots Hot Roll	Hamburger Fixin's Tater Tots Cookie
2	Spaghetti w/ Meat Sauce Salad Break Stick Fruit	Manager's Choice Salad Fresh Fruit	Pizza Fresh Veggies Salad Jello	Stk. Fingers / Gravy Mashed Potatoes Green Beans Hot Roll	Chicken Sandwich Fixin's French Fries Cookie
3	Pizza Fresh Veggies Salad Jello	Corn Dogs Mac - n - Cheese Baked Beans Fresh Fruit	Soft Tacos Salad Beans Cake	Ckn. Nuggets / Gravy Mashed Potatoes Glazed Carrots Hot Roll	Hamburger Fixin's Tater Tots Cookie
4	Manager's Choice Salad Break Stick Fresh Fruit	Pizza Corn Salad Jello	BBQ Sandwich Fresh Veggies Baked Beans Pudding	Stk. Fingers / Gravy Mashed Potatoes Green Beans Hot Roll	Chicken Sandwich Fixin's French Fries Cookie



Milk is offered daily. The student may select a variety of 3-5 components. If a child chooses less than 3 items, they will be charged at an ala carte price.



Cycle 1	Cycle 2	Cycle 3	Cycle 4
Aug. 25 - 29	Sept. 2 - 5	Sept. 8 - 12	Sept. 15 - 19
Sept. 22 - 26	Sept. 29 - Oct. 3	Oct. 6 - 10	Oct. 14 - 17
Oct. 20 - 24	Oct. 27 - 31	Nov. 3 - 7	Nov. 10 - 14
Nov. 17 - 21	Dec. 1 - 5	Dec. 8 - 12	Dec. 15 - 19
Jan. 5 - 9	Jan. 12 - 16	Jan. 20 - 23	Jan. 26 - 30
Feb. 2 - 6	Feb. 9 - 13	Feb. 16 - 20	Feb. 23 - 27
Mar. 2 - 6	Mar. 9 - 13	Mar. 23 - 27	Mar. 30 - Apr. 3
Apr. 6 - 10	Apr. 13 - 17	Apr. 20 - 24	Apr. 27 - May 1
May 4 - 8	May 11 - 15	May 18 - 22	May 25 - 29
June 1 - 5			

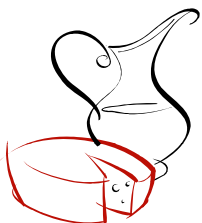


Yogurt Tray

The yogurt tray costs the same price as your child pays for his/her meals. These will be offered daily, depending on the yogurt inventory. The student needs to let the cashier know in the morning if they will be purchasing a yogurt tray for lunch.



4 oz. yogurt, 1/2 c. salad, 1/2 c. fruit, 1 oz. meat / cheese, 1 bread, milk



Contact Information

www.maypearlisd.org

Robin Leal, Child Nutrition Director

rleal@maypearlisd.org

(972) 435-1080

Elementary Cashier

elemcafe@maypearlisd.org

(972) 435-1067

Intermediate Cashier

intcafe@maypearlisd.org

(972) 435-1046

Secondary Cashier

hscafe@maypearlisd.org

(972) 435-1036



Breakfast Prices	
Reduced Students	.30
Paid Students	1.40
Adults	2.10
Milk	0.30

Lunch Prices	
Reduced Students	.40
Paid Elem. Students	2.10
Paid Int. Students	2.35
Paid Sec. Students	2.60
Adults	3.10
Milk	0.30

EZSchoolpay.com

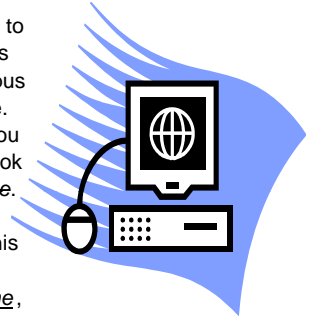


If your child has an allergy that requires a substitution of a product (example: milk intolerance substituted with juice), we are required by law to have a doctor's note on file in order to make this substitution. If your child has other allergies, please send a note or e-mail to the CN Staff so we can mark your child's account.

MISD now has the opportunity to allow parents to pay online. You will need to know your child's ID#, which you can obtain by calling your campus cashier, or find on any receipt / charge notice.

You will need to set up an account and then you will be ready to proceed. You will be able to look and to find out your child's balance at any time.

Payments usually post to accounts within 20 minutes at the most. Convenience cost for this service is \$2.50 per transaction. If you are paying for more than one child at the *same time*, this is considered one transaction. Please take note of the sheet attached informing you that if you pay 90 meals in advance, you receive a .10 discount per meal. (Breakfast or Lunch - whichever meal you are pre-paying.) If you have any questions, please call Robin Leal.



Payment Information / Check Acceptance Policy

We encourage parents to pre-pay their child/ren's account/s. When sending a check, please put the child/ren's name in the memo section along with how much you are wanting in each child's account. If you are paying for children at different campuses, please note which child is at which campus, too. No cash will be returned to a child who brings a check without a note in the memo section stating "Cash back OK" and it will need to be written by the parent. The use of a check for payment to school cafeterias is your acknowledgement and acceptance of this policy and it's terms.

SACK LUNCHES FOR FIELD TRIPS

The CN Staff offers sack lunches for field trips for the same price as your child pays for his/her lunch. We offer turkey/ham sandwich, chips, granola bar, fresh fruit, and juice. If you wish for your child to purchase a lunch, please let the CN Staff or teacher know the day before the field trip.



Menu subject to change due to supplier.

In accordance with Federal Law and US Dept. of Agriculture policy, this institution is prohibited from discriminating on the basis of race, color, national origin, sex, age or disability. To file a complaint of discrimination, write USDA, Director, Office of Civil Rights, 1400 Independence Ave, SW, Washington, D.C. 20250-9410 or call (800) 795-3272 or (202) 720-6382 (TTY). USDA is an equal opportunity employer.

MISD Child Nutrition Payment Discounts (If your child pays full price for meals.)

At any point in the school year, you can apply for the National School Lunch & Breakfast Program. If your family income decreases, please fill out an application to see if your family qualifies. (Please see income chart in this packet.) This information is strictly confidential.

Breakfast Option

If you pre-pay your child's Breakfast account by 90 meals, you will save .10 / meal. Your cost will be \$117 instead of \$126, for a savings of \$9 at breakfast.

Lunch Option

If you pre-pay your child's Lunch account by 90 meals, you will save .10 / meal.

Elementary Campus: Your cost will be \$180 instead of \$189, for a savings of \$9 at lunch.

Intermediate Campus: Your cost will be \$202.50 instead of \$211.50, for a savings of \$9 at lunch.

Secondary Campus: Your cost will be \$225 instead of \$234, for a savings of \$9 at lunch.

Combination Option

By pre-paying for breakfast and lunch by 90 meals, you will have a total savings of \$18. If you pre-pay your child's meals twice a year (at the beginning of each semester), you have a total savings of \$36 / year.

Elementary Campus - Breakfast & Lunch for 90 meals - \$297, for a savings of \$18.

Intermediate Campus - Breakfast & Lunch for 90 meals - \$319, for a savings of \$18.

Secondary Campus - Breakfast & Lunch for 90 meals - \$342, for a savings of \$18.

Each child's lunch account carries over to the following year. If they have credits on their accounts at the end of the year, the money carries over and is available for the next school year. The same goes with charges, they remain on the child's account until they are paid in full.

EZSchoolpay.com

Make payments to your child's meal acct. online!
Safe, Secure & Simple

Haga pagos a la cuenta de comida de su hijo en linea.
Confiable, Seguro y Simple

With EZSchoolPay.com, you can add money to your child's meal account using a credit or debit card. No more lost checks or envelopes! Avoid interruption of meal service by making sure money is always available for your child. Online credits are automatically added to your child's meal account balance at the school within minutes.

Con EZSchoolPay.com puede agregar dinero a la cuenta de comida de su hijo, o hacer otros pagos para la escuela, usando VISA o MasterCard (credito o debito). No mas perdidas de cheques o sobres! Evite interrupciones del servicio de comida asegurandose de que hay dinero siempre disponible para su hijo. Los creditos en linea son automaticamente agregados al balance de la cuenta de comida de su hijo en minutos.

If you have any questions, please contact me at (972) 435-1080 or rleal@maypearlisd.org.



